

> PRODUCT SPECIFICATIONS

# 123 Print



Put the intelligence,  
and simplicity, in the printer...

## 1 - Create Labels

## 2 - Capture Data

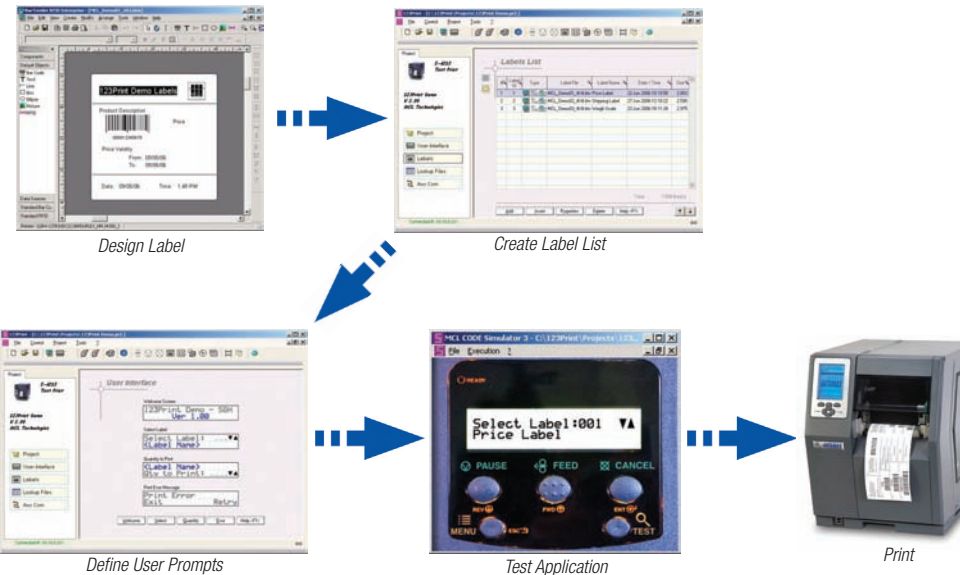
## 3 - Map Data to Label

...**PRINT!**

123 Print adds a new level of simplicity and ease of use to the Datamax family of MCL enabled products. Where MCL-Designer is an ideal tool of choice for building sophisticated, host interactive, data collection applications, 123 Print greatly streamlines and simplifies the MCL development process for stand-alone printing applications.

Combining the power of the intelligent MCL-Client in the printer with 123 Print, you'll never again need an intermediate PC server to host your label printing applications.

123 Print is a one-stop shop for developing and implementing printer resident labeling applications. The process includes label creation and layout, data capture design, and label variable mapping to create dynamic labels for Datamax printers. During the application creation phase the resulting printing application can be simulated on the development PC, and then later transferred to the MCL enabled printer from where the application will be run.



123 PRINT  
is ideal for stand-alone label printing applications.

*Datamax and MCL Technologies have worked together to bring elegant simplicity to the intelligent thermal label printer with 123 Print. MCL running in a Datamax printer allows innovative data collection applications to run in the printer without the need for a computer to host the application. Everyday label printer operators can quickly design and assemble powerful stand-alone label printing applications with 123 Print.*



[www.datamaxcorp.com](http://www.datamaxcorp.com)



**CORPORATE HEADQUARTERS**  
4501 Parkway Commerce Blvd.  
Orlando, Florida USA 32808  
Phone (407) 578-8007  
Fax (407) 578-8377  
customer@datamaxcorp.com

**DATAMAX LABELS AND RIBBONS**  
Phone (800) 321-2233  
Fax (800) 436-8920  
dmxmedia@datamaxcorp.com

**DATAMAX LATIN AMERICA**  
Phone (407) 523-5520  
Fax (407) 578-8377  
tdegado@datamaxcorp.com

**DATAMAX INTERNATIONAL**  
Phone +44 1279 772200  
Fax +44 1279 424448  
rbyrne@datamaxcorp.com

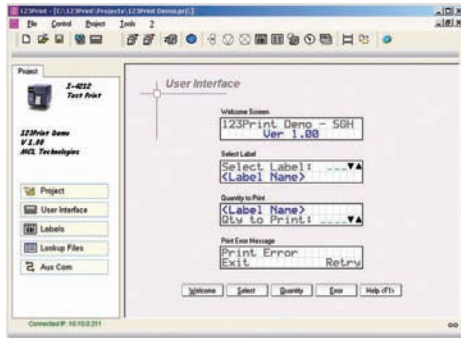
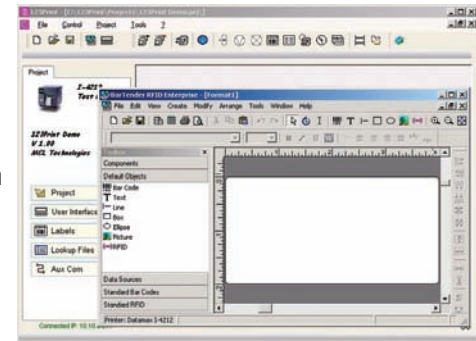
**DATAMAX ASIA-PACIFIC  
REPRESENTATIVE OFFICE**  
Phone +65-6542-2611  
Fax +65-6542-3611  
datamax@pacific.net.sg

**DATAMAX CHINA  
REPRESENTATIVE OFFICE**  
Phone +86 21 64952882  
datamax\_cn@china.com

# 123 Print - Product Specifications

## CREATE

Integrated with Seagull's BarTender for a rich graphical design experience, 123 Print provides an environment for easy addition of many labels into your printer application. Create static labels to be printed as they are, or design label templates to be merged with variable data at the moment of printing. Create new labels or import existing label formats or ASCII text Datamax Programming Language (DPL) files created from other label generation products.



## CAPTURE

Create a user-friendly interface, via interactive screen dialogues, to capture data input from printer users and peripherals connected to a printer. Whether from the front panel, an external keyboard, a barcode scanner, a weight scale, a lookup file, or other peripheral, 123 Print creates applications that handle these inputs directly on the Datamax printer. Your application takes this variable input data, inserts it into your label, and prints the label on the Datamax printer.

## MAP

Convert label templates-any static label-into dynamic labels using 123 Print's mapping function. Text, barcodes and even graphic images can be replaced "on the fly" using variable data received from printer users and peripherals.

Y Pos.	X Pos.	Original Field Data	Replace By
0279	0026	Product Description	[A1] Product Description
0244	0259	Price	[A2] Price
0195	0069	000012345678	[A0] Product Code
0220	0045	000012345678	[A0] Product Code

123Print Demo Labels

Product Description

Price

Price Validity

From: 08/25/06

To: 08/25/06

Date: 08/25/06 Time: 9:27 AM

123Print Demo Labels

Product Description

\$12.55

Price Validity

From: 08/25/06

To: 08/25/06

Date: 08/25/06 Time: 9:27 AM

# 123 Print - Puts Intelligence In Your Printers

<b>1</b>	<b>Create</b>	Labels with the power to be dynamic
	Create	Use Seagull Scientific's BarTender to create labels for use in your 123 Print application
	Edit	Edit existing BarTender labels or text files that contain DPL code
	Import	Import existing BarTender labels, or text files that contain DPL code, for use in your 123 Print application

<b>2</b>	<b>Capture</b>	Labels with the power to be dynamic
	User interface	Control your application flow and basic user dialogue with standard screens provided
	Prompt screens	Add label specific prompt screens to capture user input during operations
	Peripherals	Receive input from the printer's front panel, an external keyboard, a barcode scanner, a weight scale, or other peripheral to capture operational data for label application printing
	Lookup Files	Use data capture input as a key to retrieve additional operational information from a lookup file
	Processes	For more advanced users, use processes for any logical manipulation of the data capture input-to control application flow based upon operational input; to extract specific information from a string of data, such as weight from a weight scale; to make mathematical computations, such as the number of units of an item being weighed based upon total weight and known unit weight; to browse in a file; and much more.

<b>3</b>	<b>Map</b>	Labels that drive your operations
	Dynamic label	Merge data capture input into a label to convert a static label into a dynamic label
	Replace By	Replace a static label element with a variable data capture input using 123 Print's easy to use graphical mapping interface
	Mappable elements	Map variable content to static text, barcodes, and graphic images
	Automatic label detection	View the image of your label when you use BarTender labels. Regenerate the DPL code whenever a change in a BarTender label is detected.



<b>Utilities</b>	Accelerate project development and deployment
Simulator	Simulate your routines during development. Assure yourself that your applications are error-free and work as desired before you download them into a production environment
Debugger	Debug your routines during development. View your screens, files, variables, and MCL code dynamically as you run your application. Set break points to help isolate any problems.
Connect printer	Connect to a Datamax printer directly from 123 Print to request the printer status, initiate a printer control, load a file(s), load a project, or execute a script
Printer status	Display information about your printer, such as printer model, firmware version, and memory usage
Printer control	Initiate any printer control-feed label, pause printer, cancel printing, print test label, print configuration label, reset printer, send data time, reprint last label, or print label.
Load file	Load any file into a the connected printer-firmware, fonts, graphics, labels, profiles, MCL printer applications, lookup files, and DPL files
Load project	Load your currently active project into your printer for testing during development
Scripts	Load a predefined list of files and/or a configuration profile automatically into one or many / all printers. Scripts may be saved for repeated execution to assure that you always have the right files and configurations in your printers.

**...PRINT**



## 123 Print - Minimum Requirements

Application development PC		
Specification	Requirement (min / recommended)	
Operating System	Windows XP	Windows 2000
Processor speed (MHz)	233 / 300	133 or higher
RAM (MB)	64 / 128	64
Free hard disk space (MB)	80	80
Display	800 x 600	VGA or higher

Communication Interface			
Supported Physical Interfaces	Serial Com	Parallel	Ethernet (Network)
Protocol stacks required	n/a	n/a	TCP/IP and UDP
Ports required	n/a	n/a	3000, 9100, 5001

Printer Labels	
Label formats supported	*.btw, *.dpl, *.txt (DPL and TXT files must contain DPL instructions)
Seagull Scientific's BarTender (not included)	BarTender Enterprise Edition V7.74 or greater (installed and activated)

Datamax Printer Firmware	
MCL-Client	Version 1.20 or greater

Datamax Printers Supported					
Printer Class	A-Class	H-Class*	I-Class	M-Class	W-Class
Printer Model	A-4212 A-4310 A-4408 A-4606 A-6212 A-6310	H-4212X H-4310X	I-4210 I-4212 I-4308 I-4406 I-4604	M-4208 M-4306	W-6208 W-6308 W-8306

\* H-Class available Q4'06

Built to UL, Canadian, and European safety standards, FCC Class A emissions standard and CE Mark. This data sheet is for informational purposes only. DATAMAX MAKES NO WARRANTIES, EXPRESSED OR IMPLIED IN THIS SUMMARY. Specifications are subject to change without notice. Microsoft, Windows, Windows XP, Windows 2000, and Windows 98 are trademarks or registered trademarks of Microsoft Corporation in the United States and/or other countries. All other trademarks are the property of their respective owners. ©2006 DATAMAX BAR CODE PRODUCTS CORPORATION. All rights reserved. Datamax is an ISO 9001 registered company.

Rev. 09/06

**DATAMAX**  
A DOVER COMPANY



www.datamaxcorp.com